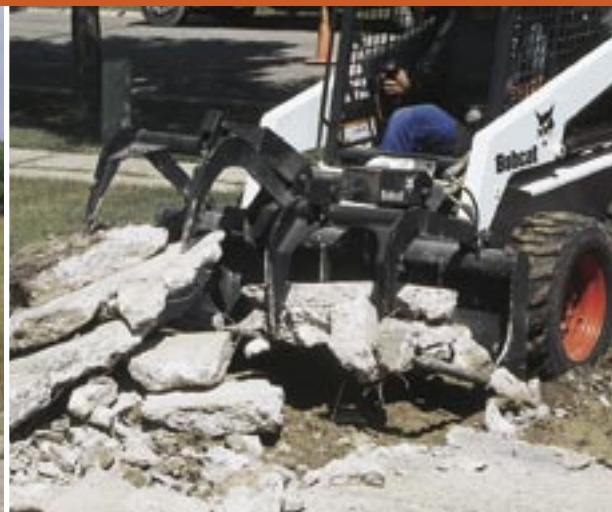


INDUSTRIAL GRAPPLE *attachments*



One Tough Animal

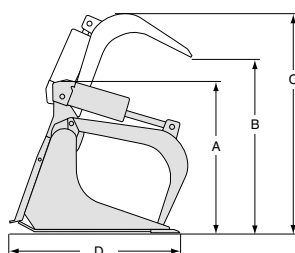
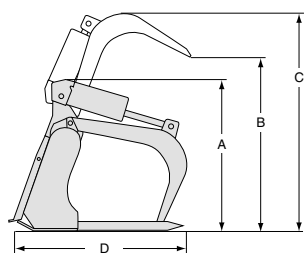
SPECIFICATIONS

Handle Scrap, Waste or Brush.

| Industrial Grapple | 60 in. Bucket | 66 in. Bucket | 66 in. Fork |
|-------------------------------|--------------------|--------------------|--------------------|
| Overall Width | 61.7 in. (1567 mm) | 67.7 in. (1720 mm) | 66.9 in. (1699 mm) |
| No. of Fork Teeth Standard | | | 7 |
| Complete | | | 13 |
| Shipping Weight | 790 lb. (358 kg) | 845 lb. (383 kg) | 845 lb. (383 kg) |
| A | 32.25 in. (819 mm) | 32.25 in. (819 mm) | 32 in. (815 mm) |
| B | 37 in. (943 mm) | 37 in. (943 mm) | 37 in. (943 mm) |
| C | 46 in. (1163 mm) | 46 in. (1163 mm) | 46 in. (1163 mm) |
| D | 37.2 in. (945 mm) | 37.2 in. (945 mm) | 37.2 in. (945 mm) |

| Industrial Grapple | 72 in. Bucket | 78 in. Fork | 80 in. Bucket |
|-------------------------------|--------------------|--------------------|--------------------|
| Overall Width | 72.9 in. (1852 mm) | 78.8 in. (2002 mm) | 80.0 in. (2033 mm) |
| No. of Fork Teeth Standard | | 8 | |
| Complete | | 15 | |
| Shipping Weight | 872 lb. (396 kg) | 1200 lb. (544 kg) | 1105 lb. (501 kg) |
| A | 32.25 in. (819 mm) | 38 in. (963 mm) | 38 in. (963 mm) |
| B | 37 in. (943 mm) | 41 in. (1037 mm) | 41 in. (1037 mm) |
| C | 46 in. (1163 mm) | 52.5 in. (1334 mm) | 51.8 in. (1316 mm) |
| D | 37.2 in. (945 mm) | 40.9 in. (1039 mm) | 41.5 in. (1055 mm) |

**Approved on 873 G-series and above*



Industrial Fork Grapples



Industrial Bucket Grapples



Revendedor autorizado BOBCAT

Tel: (31) 3492-2772

Site: www.silmaquinas.com.br

E-mail: plinio@silmaquinas.com.br

NOTE - Where applicable, dimensions are in accordance with Society of Automotive Engineers (SAE) and ISO standards. Specifications and design are subject to change without notice. Pictures of Bobcat loaders may show other than standard equipment. All dimensions are given for loader equipped with standard tires. All dimensions are shown in inches. Respective metric dimensions are enclosed by parentheses. Bobcat Company complies with the requirements of ISO 9001 as registered with BSI.

*The Bobcat Attachments Advantage:
Bobcat attachments are engineered and manufactured to fit Bobcat loaders for optimum job performance, dependability and durability.*

Bobcat Industrial Grapple Attachments fit these carrier models:

Skid-Steer Loaders:

753
763
S130
S150
S160
773
S175
S185
863
873*
883
S220
S250
S300
963

Compact Track Loaders:

T180
T190
T200
T250
T300

All-Wheel Steer Loaders:

A220
A300